

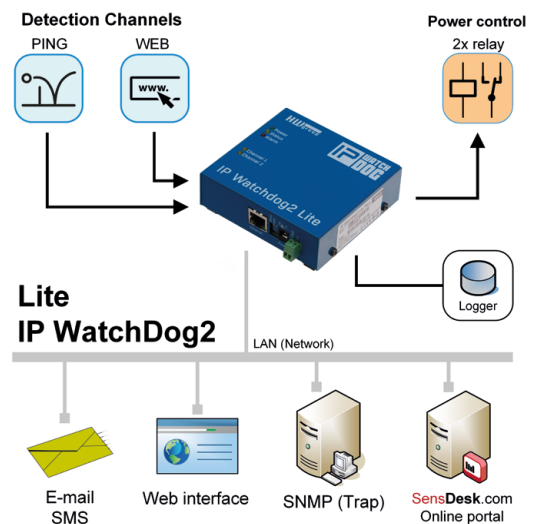
# IP WatchDog2 Lite

Functionality monitoring and restart of up to 2 LAN devices.

IP WatchDog2 monitors functionality of all connected devices. It can for example PING a connected device and when it does not get an answer, it can reset the device, turn it off/on or notify the operator. The device is completely autonomous.

IP WatchDog2 detect the functionality of the connected device and can restart it by interrupting the power supply. You can monitor one or two devices (two channels). The functionality detection is user configurable.

The second generation adds SNMP, SMS sending support and can be connected to the [www.SensDesk.com](http://www.SensDesk.com) online portal.



## Applications

- Detects outages (freezing) of an IP camera and restarts it by switching off the power supply. Sends an email notification about the reset to its operator
- Monitors router, switch or a WiFi AP functionality. Restarts the device once or periodically after detecting an outage.
- Sends an SMS message via external HWg-SMS-GW in case of internet connection outage.
- Operator can remotely control power supplies of the connected devices via WEB interface.

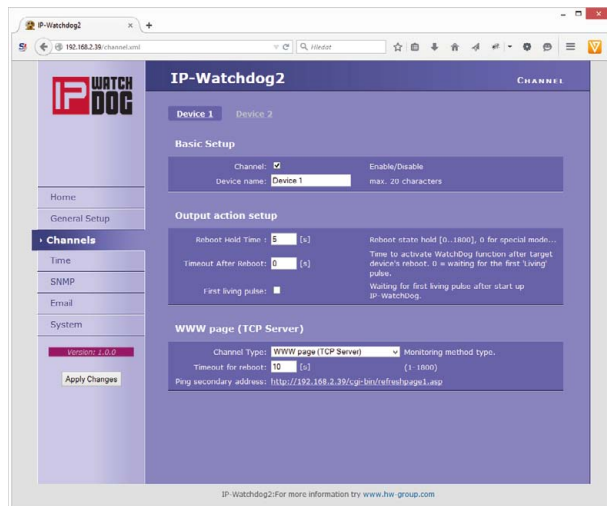
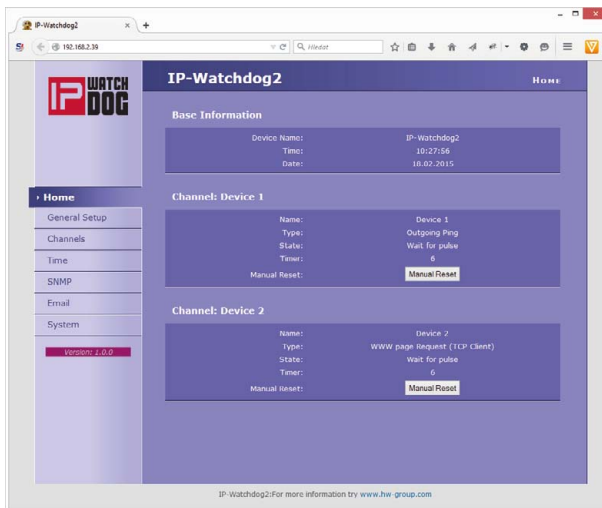
- ✓ SMS alarms
- ✓ Email notifications
- ✓ SNMP monitoring
- ✓ Simple usage
- ✓ Two channels, two relay outputs
- ✓ Can be connected to SensDesk.com

## Basic features

- Can detect outage of a LAN device or of an Internet connection
- Logs any detected outages to its internal memory and notifies the operator via email or SMS.
- Restarts the "frozen" device by cutting off the power supply, without the operator's interference.
- Can be connected to a SNMP monitoring system.
- Configuration and digital outputs control options available via web interface
- Compatible services: SensDesk.com
- Sends SMS via external HWg-SMS-GW in the network. No additional software needed.
- Supports "SMS + Ring" function, which drop calls the recipient of an alarm message.

## IP WatchDog2 Lite

Ethernet	100 Mbit/s
Functionality detection	10 LAN devices
Detection method	PING, WEB
Relay output	max. 30V / 1A DC max. 50V / 0,5A AC
Communication	SNMP, SNMP Trap, HWg-Push
Internal LOG	200 records
Installation	stadaalone, Rack 19", DIN
Power input	9-30V
Dimensions	100 x 94 x 25 [mm]
Operating temperature	-30°C to +85°C



## Optional accessories



HWg-SMS-GW3



PowerEgg2



IP WatchDog2 Industrial



HWg-PDMS

<b>HWg-SMS-GW3</b>	A GMS gateway for sending SMS messages from HW group devices.
<b>IP WatchDog2 Industrial</b>	WatchDog2 is designed for functionality monitoring of up to 10 LAN devices.
<b>PowerEgg2</b>	A sensor for 220V/8A power supply monitoring with switch options.
<b>HWg-STE plus</b>	Temperature monitoring solution, the device has two digital inputs and can be connected to an LAN