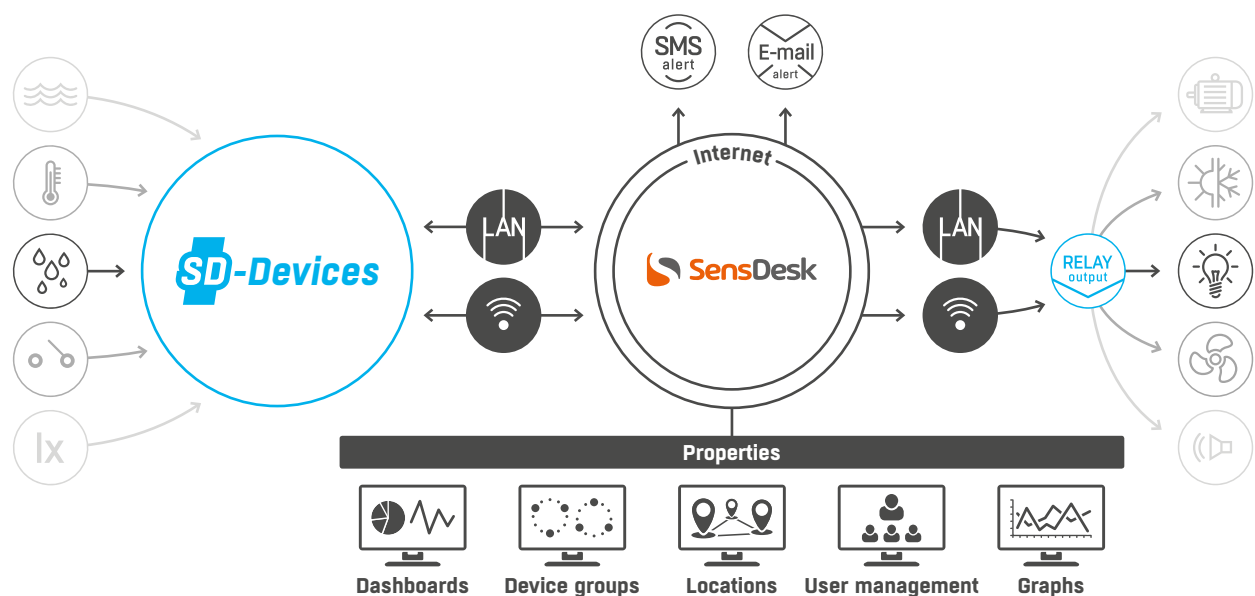




# SD devices

The SD family are 4 simple devices for the monitoring of temperature, humidity, voltage, current and other parameters. They also detect water leaks, smoke, movement or open doors. The devices connect via Ethernet or WiFi to the SensDesk.com portal.





## SD-2x1Wire

Connect up to four sensors of temperature, humidity, voltage, current, light, air flow and many others. The sensors can be 1-Wire or 1-Wire UNI.



## SD-WLD

Water leak detection using a sensitive cable. The cable detects even a few drops of water, so it can be also used to detect condensation. Cable can be up to 85 meters long.



## SD-2xIn

Two digital inputs for door contacts, or any other detector with a dry contact output such as motion, fire, smoke or gas detectors.

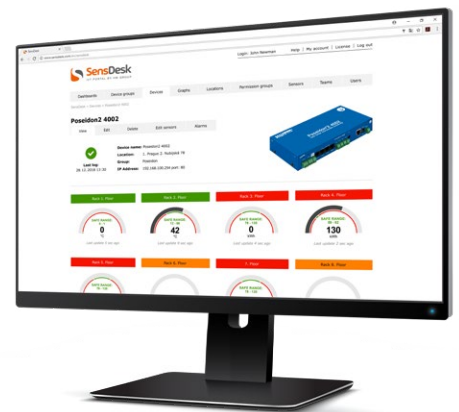
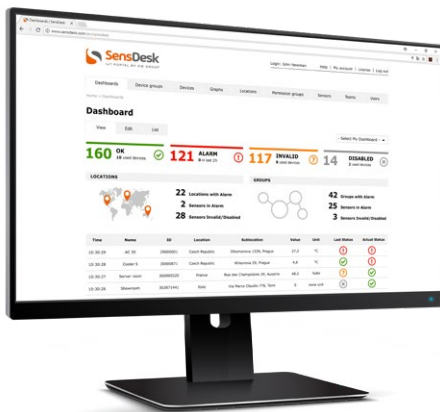


## SD-2xOut

Two relay outputs easily controlled from the SensDesk portal. You can switch them either manually or with a condition (local or remote).

## SD Devices Features

- Ethernet and WiFi – 802.11 b/g/n (2.4GHz)
- Powered by 5V DC or PoE
- Simple installation, DHCP support
- Simultaneous Ethernet and WiFi operation
- Embedded WEB server
- Security protected with a password
- Easy setup with a few clicks
- Metal housing, DIN and rack mount available



## Why use SensDesk.com?



### Remote monitoring

Temperature, humidity, power consumption, intrusion, water detection and many more...



### Event alerts

Get alarms over SMS or e-mail and be sure you can respond to the event in time.



### Reports and graphs

Generate automatic reports and access data history with just a click.



### Remote output control

Use conditions to automatically respond to alarms or control outputs manually.



### User friendly and reliable

Easy for home users, robust, customizable and scalable for business.



### SensDesk can connect to third party systems

You can send your data to other applications using XML, MQTT, SNMP or ModBus TCP.