

Power distribution for IT equipment

Basic
In-Line Metered
Metered Input

Metered Outlet
Switched
Managed

Rack PDU G3+

2019 Version



EATON

Powering Business Worldwide

Rack PDU G3+

New features 2019	G3+ range	G3 range
Extra flat breaker: avoid accidental tripping	✓	
P-Lock & eGrip plugs: secure your IEC power cable	✓	
Alternating Phase 3P-32A: Natural load balancing	✓	
Stronger mounting system	✓	
Daisy chain up to 3 sensors: Collect more environmental data's per rack	✓	✓ ¹
Cybersecurity enhancement	✓	✓ ¹
USB Smart Commissioning Tool (Coming later): Fast individual configuration deployment	✓	✓ ¹

1. available with the latest firmware 4.x or later

Outlets with dual built-in security mechanism New

eGrip system to secure standard IEC power cables (Eaton's patent-pending) with a lever-actuated grip that's integrated into each outlets. Once the levers click into the grip position, the plugs are secured from accidental disconnect due to bumps or vibrations. Outlets are also compatible with a **locking system** using IEC P-Lock power cables.



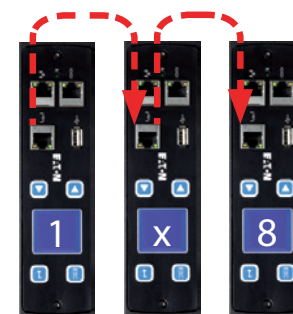
Hot-swap capability

Eaton's hot-swap control module can be replaced without the need to power down your rack. Increase uptime while enhancing service ability and saving on unnecessary service calls. The menu-driven pixel display allows for easy setup and troubleshooting.



Daisy chain eight units from one IP address

Eaton's new patented daisy-chain capability allows up to eight ePDUs to share the same network connection and IP address. Eaton technology provides a 87% percent reduction in network infrastructure costs.



Natural load balancing by design New

Alternating phase per section on all 3 Phase 32A ePDUs to naturally balanced the rack power load using shorter cables.



Quickly identify load protection and phase with color coded sections

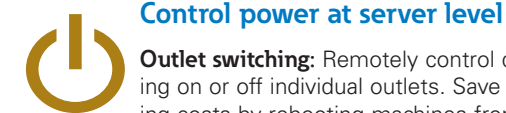
One color for each phase, one letter per breaker protection.



Provide zero interference into the rail space New

New extra flat breakers and low-profile form factor chassis to avoid accidental tripping.

Upgrade your power distribution



Control power at server level

Outlet switching: Remotely control devices by powering on or off individual outlets. Save time and operating costs by rebooting machines from your control center without costly site visits.

Sequential start up: Make sure your servers start sequentially to avoid in rush current and start your database before the application.

Turn off unused outlets: Control unauthorized use.

Daisy Chain Sensor New

Daisy chain up to 3 sensors per rack PDU to get more environmental data's from your rack. Each sensor has 1 temperature probe, 1 humidity probe and 2 dry contacts.



Cybersecurity enhancement New

The firmware is updated on regular basis to keep the ePDU cybersecurity to highest standard



High 60°C operating temperature

Fully functional in high operating temperature environments, resulting in reduced cooling costs.

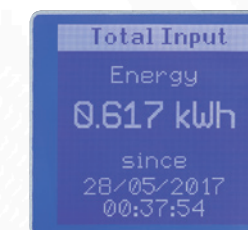
Universal mounting system New

Vertical units (0U) include both rear & side button mounting system stronger than before and Eaton's patented variable clip feet. Horizontal units (1U/2U) come with rack ear support.



±1% Accurate Power Measurement

ePDU G3 provides one percent revenue-grade power monitoring for higher accuracy in department billing or colocation data centers. Effectively measure power usage to all outlets or individual outlets.



Device reboot and measurement across A and B feed

When connecting multiple source input servers to an A and B feed power source, the daisy-chain capability allows you to group power supplies across the ePDU. As a result, all the power supplies are controlled with a single action, which saves time rebooting servers with two to six power supplies. The power consumption is available for each device.



ePDU G3+ Key features & technical specification



		Basic	In-Line Metered	Metered Input	Metered Outlet	Switched	Managed
Basic features	Outlets with dual built-in security mechanism eGrip & P-Lock	√	NA	√	√	√	√
	Colour-coded outlet and branch circuits for simple load balancing	√	NA	√	√	√	√
	60°C Operating temperature	√	√	√	√	√	√
	Universal rack mounting system (button & clip feet)	√	√	√	√	√	√
	Alternating phase per sections (available on 3Phase 32A PDU)	√	√	√			√
Standard features	Hot-Swap Control module with Advanced LCD + Optional Temp/Humidity sensor		√	√	√	√	√
	±1% IEC Class 1 Billing Grade Accuracy for V, W, A and kWh & Cisco EnergyWise compliant		√	√	√	√	√
	Phase Metering, Circuit Breaker Current Metering and Input Metering		√	√	√	√	√
	Daisy-Chain up to 8 ePDUs, reduce network infratructure costs		√	√	√	√	√
	Power chain monitoring & Real time Intelligence on your Data Center, via Eaton and advanced action on virtual environment via Eaton IPM Edition		√	√	√	√	√
Advanced features	Protocols & standards HTTPS, SSL, Telnet, FTP, SNMP, SMTP, DHCP, LDAP, RADIUS, DHCP 66/67 for Mass Configuration		√	√	√	√	√
	Circuit Breaker Status Monitoring				√	√	√
	Outlet and IT Equipment Metering across A and B feed				√		√
	Level 3 PUE measurements				√		√
	Turn off unused outlets to control commissioning					√	√
	Outlet and IT Equipment Switching/reboot/sequencing across A and B feed					√	√

Input Type / Rating (A)				Outlet type: Qty	Breakers	Nominal Power	Basic p/n	Dimensions L x W x D, mm	In-Line Metered & Dual p/n	Dimensions L x W x D, mm	Metered Input p/n	Dimensions L x W x D, mm	Metered Outlet p/n	Dimensions L x W x D, mm	Switched p/n	Dimensions L x W x D, mm	Managed p/n	Dimensions L x W x D, mm
1 Phase	C14 10A			8xC13		2.3kW	EBAB02	443x19"x53			1U EMIH02	1Ux19"x203						
				12xC13		2.3kW	EBAB19	443x19"x53										
				16xC13		2.3kW	EBAB03	704x52x53			EMIB03	1070x52x53			ESWB03	1154x52x53	EMAB03	1154x52x53
	C20 16A	FlexPDU*		8xFR: 1xC19		3.7kW	1U EFLX8F	1Ux19"x80										
				8xGE: 1xC19		3.7kW	1U EFLX8D	1Ux19"x80										
				6xUK: 1xC19	2 single pole	3.7kW	EFLX6B	52x19"x120										
				12xC13: 1xC19	2 single pole	3.7kW	1U EFLX12I	1Ux19"x80										
				16xC13		3.7kW	EBAB21	704x52x53										
				8xC13		3.7kW			1U	EMIH28	1Ux19"x203		1U ESWH28	1Ux19"x203	1U EMAH28	1Ux19"x203		
				20xC13: 4xC19		3.7kW	EBAB22	1070x52x53			EMIB22	1070x52x53	EMOB22	1604x52x53	ESWB22	1604x52x53	EMAB22	1604x52x53
3 Phase	IEC60309 16A			20xC13 : 4xC19		3.7kW	EBAB04	1070x52x53			EMIB04	1070x52x53			ESWB04	1604x52x53	EMAB04	1604x52x53
				IEC60309		3.7kW			EILB13	443x52x53								
	2 x IEC60309 16A			2xIEC60309		3.7kW			EILB24	443x65x52								
	IEC60309 32A			12xC13 : 4xC19	2 single pole	7.4kW					EMIB06	1070x52x53						
				20xC13 : 4xC19	2 single pole	7.4kW	EBAB05	1070x52x53			EMIH06	2Ux19"x127					2U EMAH06	2Ux19"x225
				28xC13 : 4xC19	2 single pole	7.4kW					EMIB05	1154x52x53	EMOB05	1604x52x53	ESWB05	1604x52x53	EMAB05	1604x52x53
				36xC13 : 6xC19	2 single pole	7.4kW	EBAB08	1604x52x53			EMIB08	1604x52x53					EMAB71	1829x52x53
				IEC60309		7.4kW			EILB14	443x52x53								
	2 x IEC60309 32A			2xIEC60309		7.4kW			EILB25	443x65x52								
	IEC60309 16A			21xC13 : 3xC19		11kW	EBAB20	1070x52x53			EMIB20	1070x52x53	EMOB20	1604x52x53	ESWB20	1604x52x53	EMAB20	1604x52x53
				36xC13 : 6xC19		11kW	EBAB00	1604x52x53			EMIB00	1829x52x53						
	IEC60309 32A Alternating phase per section			3xC13 : 6xC19	6 single pole	22kW	EBAB01	704x52x53										
				6xC13 : 12xC19	6 single pole	22kW					EMIB07	1604x52x53						
				18xC13 : 6xC19	6 single pole	22kW											EMAB33	1829x52x65
				12xC13 : 12xC19	6 single pole	22kW					EMIB12	1604x52x53					EMAB12	1829x52x65
				24xC13 : 6xC19	6 single pole	22kW	EBAB32	1154x52x53			EMIB32	1604x52x53						
				30xC13 : 12xC19	6 single pole	22kW					EMIB34	1829x52x65						
				IEC60309		22kW			EILB15	443x52x53								
	2 x IEC60309 32A			2xIEC60309		22kW			EILB26	443x65x52								

* Basic G3 features not applicable for the FlexPDU range
All standard ePDUs come with 3m cable

Need Something Special? We make your custom ePDUs, please contact your local reseller.
Standard models above are stocked in Europe.

ePDU G3 Accessories

Accessories	Part Number	Benefits
Environmental Monitoring Probe (EMP) Gen 2	EMPDT1H1C2	Get live measurement on temperature, humidity, set threshold and be notified in real time
Adaptor Fast Ethernet Gigabit	GBCONV	Quick and easy way to upgrade your 10/100 Mb network interface G3 ePDU to Gigabit speed
ePDU to UPS cables	CBL0UT32 CBL20UT32	Connect an ePDU 32A input to the hardware output UPS
Water leak detector*	WLD012	Detect floods and water leaks
Door contact sensor*	DCS001	Monitor your rack access

*Door contact sensor and water leak detector can be connected through EMPDT1H1C2 dry contacts



GBCONV



EMPDT1H1C2



DCS001*



WLD012*



CBL20UT32



CBL0UT32

Warranty+1
Warranty+3

All ePDU G3 come with a 2 years warranty as standard.
Standard product Warranty can be extended of 1 additional year (Warranty+1) or 3 additional years (Warranty+3)



Eaton ePDU Basic G3 has a compliant environmental declaration

Need Something Special? Your perfect Rack PDU on demand

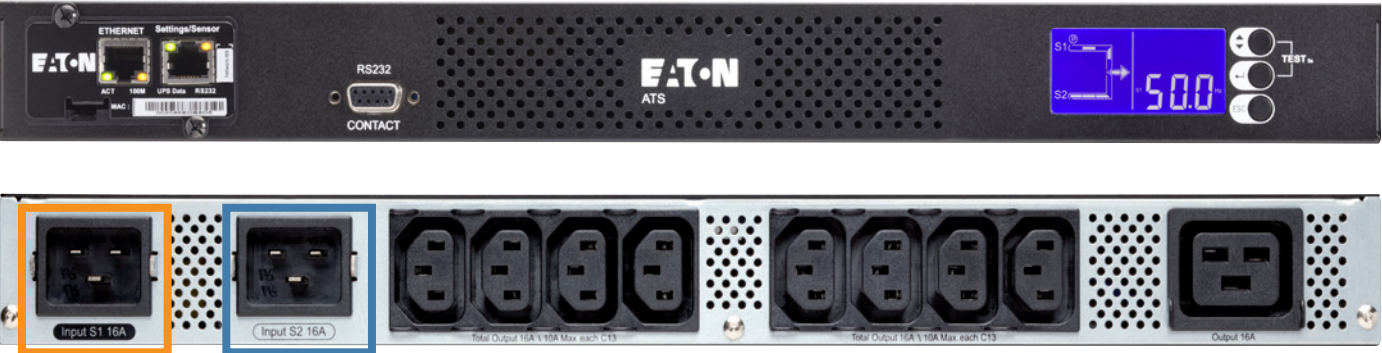


Dedicated engineering teams to create your perfect Rack PDU on demand. Specific configurations or complete engineering projects

- Typical requirements:
- Halogen free material, national socket types, specific number of C13/C19 outlets
 - Colored ePDUs on demand to easily identify power source feed
- New** Dual ePDU packaging on demand to reduce environmental impact.

Add power redundancy solution for mono power supply devices

Eaton ATS are designed to provide power supply redundancy for single connection equipment. With ATS, power from two independent sources can be supplied to IT equipment, which have only one input power supply.



Both sources (primary and secondary) are connected in a straightforward manner to the ATS in the base of the rack. The Eaton ATS then controls the redundancy of this electrical power supply.

If the **primary source** fails, transfer to the **secondary source** is automatic and instantaneous.

IPM Editions, Understand and Manage your power infrastructure

IPM Understand Edition helps to bridge the gap between facility and IT management by providing you just enough information, when you need it and where you need it.

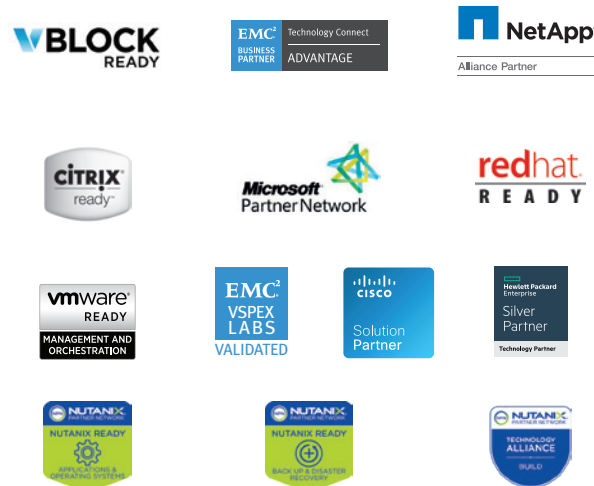
Understand Edition
Understand your power chain infrastructure

Trial Version available

- Monitoring of Eaton and many 3rd party power devices
- Power & Environmental reports
- Trending analysis
- Control your load balancing and power redundancy

Eaton collaborates with the leaders in converged and hyper-converged infrastructures

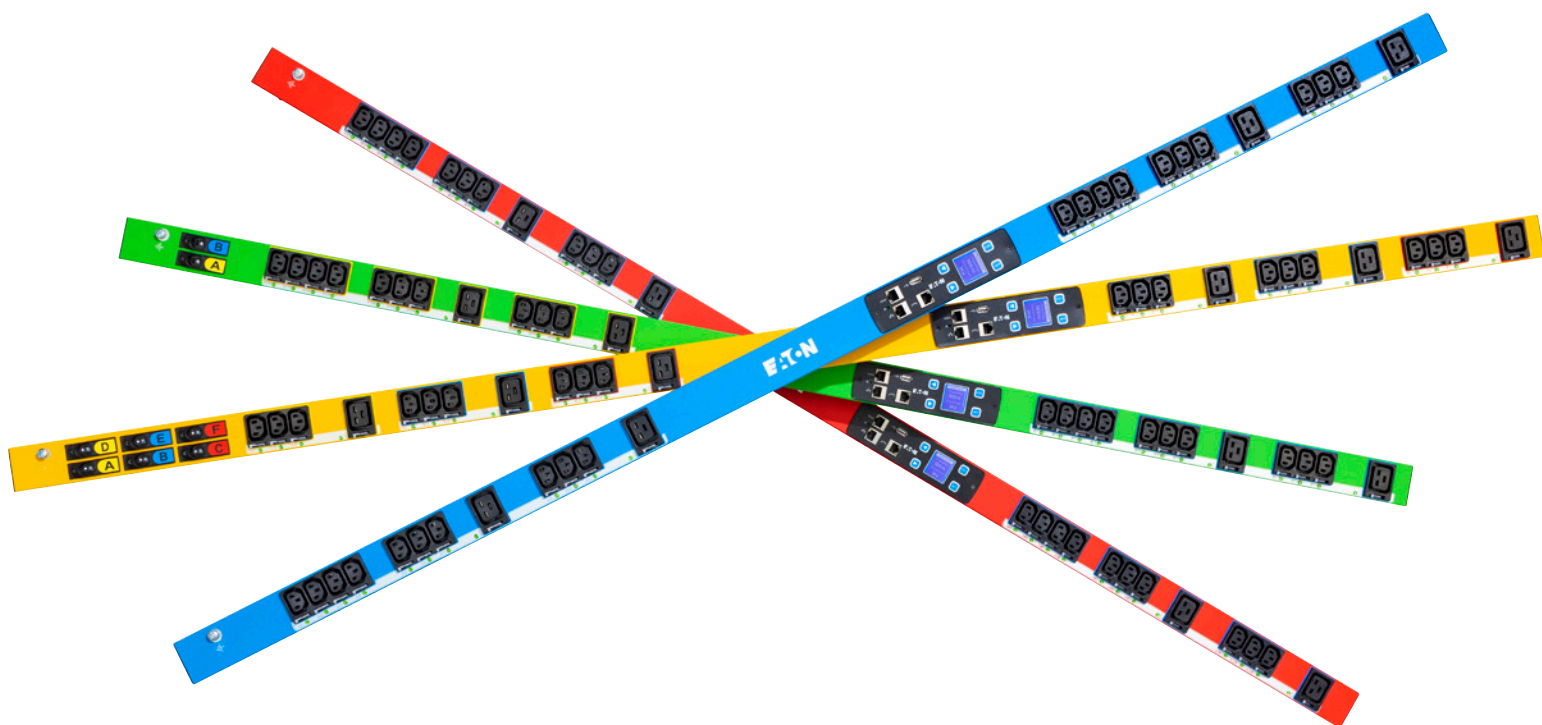
Our lab-validated power management solutions ensure high uptime of IT systems and data integrity in case of power and environmental issues.



New Rack PDU Selector

rackpduselector.eaton.com/gb

From, input plugs to form factors and measurement features, Eaton's RackPDU selector tool can help you find the right solution for your specific IT needs.



www.eaton.eu/ePDUG3

Changes to the products, to the information contained in this document, and to prices are reserved; so are errors and omissions. Only order confirmations and technical documentation by Eaton is binding. Photos and pictures also do not warrant a specific layout or functionality. Their use in whatever form is subject to prior approval by Eaton. The same applies to Trademarks (especially Eaton, Moeller, and Cutler-Hammer). The Terms and Conditions of Eaton apply, as referenced on Eaton Internet pages and Eaton order confirmations.

Eaton
EMEA Headquarters
Route de la Longeraie 7
1110 Morges, Switzerland
Eaton.eu

© 2019 Eaton
All Rights Reserved
Printed in Europe
Publication No. BR155022EN
June 2019

Eaton is a registered trademark.

All other trademarks are property of their respective owners.

Follow us on social media to get the latest product and support information.



Powering Business Worldwide