



Smart-UPS On-Line Lithium-ion UPS 230V

APC™ single-phase, rack/tower convertible, double conversion on-line UPS with Lithium-ion batteries and remote management flexibility help you address challenges at the edge.



apc.com/lithium-ion

Life Is On



A UPS developed for availability of your loads under unstable power conditions

Smart-UPS™ On-Line provides high-density, double-conversion, online power protection for servers, voice/data networks, medical labs and light industrial applications. The Smart-UPS On-Line has a rack/tower convertible chassis with Lithium-ion batteries that allow for greater performance at higher temperatures and increased lifecycle of the UPS. When business-critical systems require runtime in hours, not minutes, Smart-UPS On-Line can be configured with multiple Lithium-ion battery packs to meet your runtime demands.

The entire Smart-UPS On-Line family provides value to customers with demanding power conditions, including a very wide input voltage window, extremely tight output voltage regulation, frequency regulation, internal bypass and input power factor correction.

The included PowerChute™ Business Edition software provides unattended graceful shutdown of network operating systems.



Save up to 58% on total cost of ownership with Smart-UPS On-Line Lithium-ion solutions

APC Smart-UPS with Lithium-ion technology enables IT professionals to operate effectively and lower Total Cost of Ownership (TCO) by minimizing UPS maintenance and offering remote UPS management across distributed environments.

Why should you consider Smart-UPS On-line Lithium-ion?



2X Longer life expectancy than VRLA batteries



Eliminate the cost of battery replacement, labor, shipping and recycling



Save on TCO by up to 58%



Better battery performance at ambient temperatures, up to 104°F/40°C



One-third lighter batteries for easier handling and installation



Remote UPS management options



Five-year factory warranty on the UPS and battery



Battery management system and certifications provide higher level of performance



Greater efficiency in charge and discharge of the batteries

Smart-UPS On-Line Lithium-ion UPS

Industry-leading power factor and Lithium-ion batteries maximizing UPS density
1000VA to 3000VA



Features

High power density

More real power in watts, 0.9 pf

Graphical LCD display

Intuitive interface with multicolor backlight.

Built-in energy meter

Measures energy use and displays UPS efficiency in operating modes for easy tracking.

Intelligent battery management system

Measures energy use and displays UPS efficiency in operating modes for easy tracking.

Lithium-ion battery pack

Longer battery life and performance at higher temperatures than VRLA. The flexibility to add up to 10 additional battery packs to expand runtime.

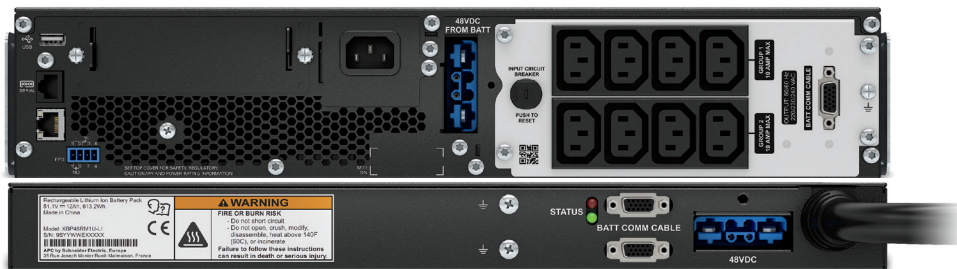
Operate without battery

Immediately protect equipment when power returns after a complete discharge of the battery.

Smart-UPS On-Line Lithium-ion UPS

Proven performance with the world's largest installed base of single-phase, double-conversion products.

SRT1500RMXLI



Features

Optional network management card with environmental monitoring

Remote monitoring and control of the UPS and the environment via Ethernet connection.

Switched outlet group

Control a group of output load receptacles independent from the main UPS:

- Cycling the entire UPS
- Sequenced turn ON/OFF
- Shedding of noncritical loads based on battery time, runtime remaining and overload
- Scheduled time OFF to conserve energy
- Rebooting hung device without cycling the entire UPS

Emergency power off

Shutoff UPS remotely in the event of a fire or other emergency. The UPS can accept normally open (NO) or normally closed (NC) contacts.

Flash upgradeable firmware

Allows for field updates of firmware via communication ports or Network Management Card (NMC).

Built-in automatic and manual bypass

Ensures seamless power to the load even when UPS functional failure is detected.

Communication ports

Options of Serial, USB, Ethernet and SmartSlot™ for network accessory cards.

Communication protocols

Choose from Modbus serial, USB PowerSummary, HTTP, SNMP and Telnet.

Smart-UPS On-Line display

Intuitive, easy-to-use LCD provides clear and accurate information in multiple languages



Backlit screens:

Amber: Indicates a condition that requires attention



Backlit screens:

Red: Indicates a UPS visible alarm that requires immediate attention

Features

LCD display screen

Clear, consistent and detailed information in your choice of basic or advanced menus.

Power status

- Operating mode and efficiency mode
- Load VA/watts/amps
- Input/output voltage and frequency
- Battery capacity and runtime
- Energy meter

Control

UPS and outlet group settings, Bypass control

Configuration

- Output voltage, frequency
- Language
- Brightness, contrast
- Alarm volume
- IP address

Test and diagnostics

Initiate battery and runtime calibration tests

About

- UPS serial number, battery part number
- Battery install and suggested replacement dates

Smart-UPS On-Line Lithium-ion Battery Pack

Long life, lighter weight, higher performance, high density



Features

Longer lifecycle

Double the life expectancy vs. sealed lead acid batteries

Lighter weight

1/3 lighter than sealed lead acid battery pack

High density

1U rack height allows more extended run capability in a smaller footprint.

Intelligent battery management system

Monitoring at the cell level to manage voltage helps Lithium-ion batteries provide a higher level of performance.

Certified Lithium-ion batteries

IEC62133, UL1973 (Sec 5.7 & 5.8), UN38.3

Smart-UPS management solutions



PowerChute Business Edition

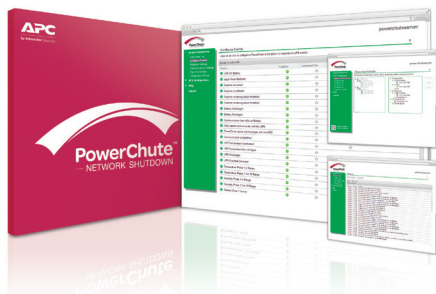
For graceful UPS shutdown

Built-in manageability for your UPS unit

PowerChute™ Business Edition software provides UPS management, system shutdown and innovative energy reporting capabilities. Energy usage, cost and CO₂ reporting provides a greater understanding of the energy consumed by IT equipment, enabling improved energy efficiency. Advanced analysis features help to identify the causes of potential power-related problems before they occur, ensuring the health of your protected equipment.

PowerChute Business Edition features:

- Graceful system shutdown
- Error notifications
- Risk-assessment reporting
- Scheduled shutdowns
- Energy-usage reporting
- Centralized monitoring
- Recommended actions
- Battery status
- Outlet-aware shutdown
- Event and data logging
- Power-event summary
- Voltage analysis



PowerChute Network Shutdown

For machine prioritization

Reliable, virtualized shutdown of multiple devices

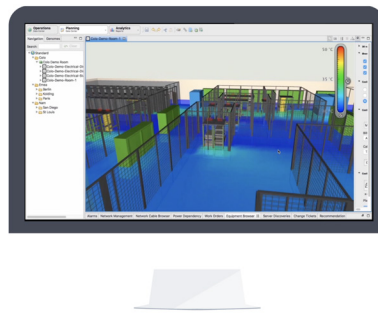
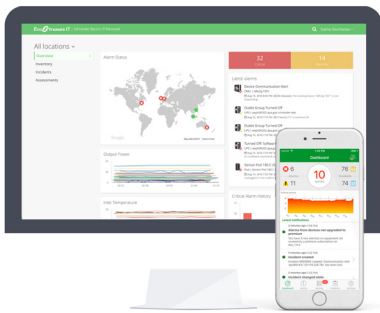
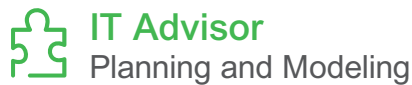
PowerChute™ Network Shutdown Edition software provides UPS management, system shutdown and innovative energy reporting capabilities. Energy usage, cost and CO₂ reporting provides a greater understanding of the energy consumed by IT equipment, enabling improved energy efficiency. Advanced analysis features help to identify the causes of potential power-related problems before they occur, ensuring the health of your protected equipment.

PowerChute Network Shutdown features:

- Graceful network-based shutdown
- Sequenced server shutdown
- Integration with VMware and Microsoft Hyper-V
- Support for virtual clusters
- Migration / shutdown by virtual machine
- IPv6 support
- Virtual machine prioritization
- Command file integration
- Redundant and parallel UPS support
- Event logging
- HTTPS communications
- Scalable architecture for host of client system

Smart-UPS cloud-enabled management options

EcoStruxure IT



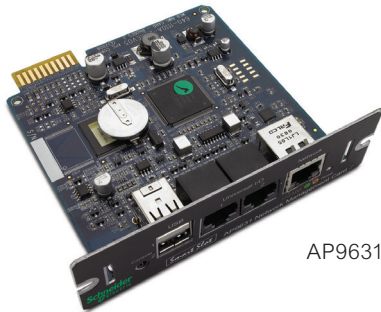
IT Expert helps the IT Professional manage their IT equipment for Local Edge and Distributed IT. It synthesizes performance and alarming data into proactive recommendations and enables secure, wherever-you-go visibility.

IT Advisor is an asset planning tool that enables Data Center Managers to reduce OPEX, plan for uptime and automate reporting by optimizing capacities, analyzing business impact, automating workflow and deploying energy-based billing.

Asset Advisor provides a remote monitoring service for your critical equipment, increasing Resiliency and quick resolution through Schneider Electric's service personnel equipped with real-time device data to quickly troubleshoot and dispatch.

UPS Network Management Cards

For remote management and control



AP9631

Connect to your network and enjoy direct control

APC UPS network management cards allow for secure connection and control of an individual APC UPS unit via web browser, command-line interface or SNMP. The configurable notification features keep you informed of problems as they occur. For protected servers, the included PowerChute network shutdown software provides graceful, unattended shutdown in the event of an extended power outage, keeping business information.

Management card options

- AP9630: UPS network management card
- AP9631: UPS network management card with environmental monitoring
- AP9635: UPS network management card with environmental monitoring, out-of-band access and Modbus
- AP9620: Legacy communications SmartSlot™ card

Network management card features

- View the user interface with a browser for quick access from anywhere on a secure network.
- Enable remote device management of your UPS by connecting it directly to the network.
- Get real-time error event notifications to quickly respond to critical situations, reducing repair time and maximizing uptime.
- Eliminate the need to dispatch technicians to remote locations by rebooting equipment remotely.

Smart-UPS Accessories

Service bypass panels



- SBP1500RMI: APC service bypass PDU, 230V; 10amp with (6) IEC C13



- SBP3000RMI: APC service bypass PDU, 230V; 16amp with (6) IEC C13 and (1) C19



- SBP3000RMHW: APC service bypass 100-240V; 16amp; Hardwire Input/Output

Product family

SKU technical specifications



| | SRTL1000RMXLI SRTL1000RMXLI-NC* | SRTL1500RMXLI SRTL1500RMXLI-NC* | SRTL2200RMXLI SRTL2200RMXLI-NC* | SRTL3000RMXLI SRTL3000RMXLI-NC* |
|---|---|------------------------------------|---|---------------------------------------|
| Topology | Double Conversion On-Line | | | |
| Output | | | | |
| Output power capacity | 900 Watts / 1000 VA | 1350 Watts / 1500 VA | 1980 Watts / 2200 VA | 2700 Watts / 3000 VA |
| Nominal output voltage | 230V | | | |
| Output voltage distortion | Less than 1% at linear load (Full) | | | |
| Output frequency (sync to mains) | 50/60 Hz +/- 3 Hz (auto sensing) | | | |
| Waveform type | Pure Sine Wave | | | |
| Output connections | (8) IEC320 C13 | | (6) IEC320 C13, (2) IEC320 C19 | |
| Switched outlet groups | Yes | | | |
| Efficiency at full load | >95% | >96% | >95% | >96% |
| Input | | | | |
| Nominal input voltage | 230V | | | |
| Input frequency | 50/60 Hz +/- 3 Hz (auto sensing) | | | |
| Input connections | IEC-60320 C14 | | IEC-60320 C20 | |
| Input voltage range for main operations | 160-275 VAC (±5V) (10V minimum hysteresis, ±1.5% max measurement accuracy) | | 160-275V (10V minimum hysteresis, ±1.5% max measurement accuracy) | |
| Batteries and runtime | | | | |
| Battery type | Lithium-ion NMC chemistry (LiNiMnCoO2) | | | |
| Runtime | 41 mins 50% load, 21 mins 100% load | | 28 mins 50% load, 13 mins 100% load | 21 mins 50% load, 9 mins 100% load |
| Additional external battery packs | up to 5 | | up to 10 | |
| Communications and management | | | | |
| Interface port(s) | Serial (RJ45), Smart-Slot, USB | | | |
| Available SmartSlot interface quantity | 1 | | | |
| Control panel | Multi-function LCD status and control console | | | |
| Audible alarms | Audible and visible alarms prioritized by severity | | | |
| Emergency Power Off (EPO) | Yes | | | |
| *Preinstalled Network Management Card | Included with "NC" suffix SKU | | | |
| Physical | | | | |
| UPS | | | | |
| Net HxWxD | 85mm x 432mm x 590mm | | 85mm x 432mm x 639mm | |
| Rack height | 2U | | 2U | |
| Net weight | 13.7kg | | 17.5kg | |
| Shipping weight | 21kg | | 25kg | |
| Shipping HxWxD | 245mm x 600mm x 810mm | | 245mm x 600mm x 870mm | |
| Color | Black, aluminum bezel | | | |
| Lithium-ion External Battery Pack | | | | |
| Net HxWxD | 43mm x 432mm x 521mm | | 43mm x 432mm x 521mm | |
| Rack height | 1U | | 1U | |
| Net weight | 13kg | | 13kg | |
| Shipping weight | 16.4kg | | 16.4kg | |
| Shipping HxWxD | 200mm x 600mm x 850mm | | 200mm x 600mm x 850mm | |
| Environmental | | | | |
| Operating environment | 32 – 104 °F (0 – 40 °C) | | | |
| Operating relative humidity | 0 – 95% | | | |
| Operating elevation | 0-10000 feet (0-3000 meters) | | | |
| Storage temperature | -15 to 45 °C (-30 to 70°C without batteries) | | | |
| Storage relative humidity | 0 – 95% | | | |
| Storage elevation | 0-50000 feet (0-15000 meters) | | | |
| Audible noise at 1 meter from surface of unit | 50.0dBA | | | |
| Conformance | | | | |
| Regulatory approvals | IEC62133, UL1973 (Sec 5.7 & 5.8), UN38.3, IEC 62040-1, IEC61000-2, CE, CE Mark, EAC, RCM, VDE | | | |
| Standard warranty | Five years on UPS and five years on battery pack repair or replace | | | |

Life Is On



apc.com/lithium-ion