

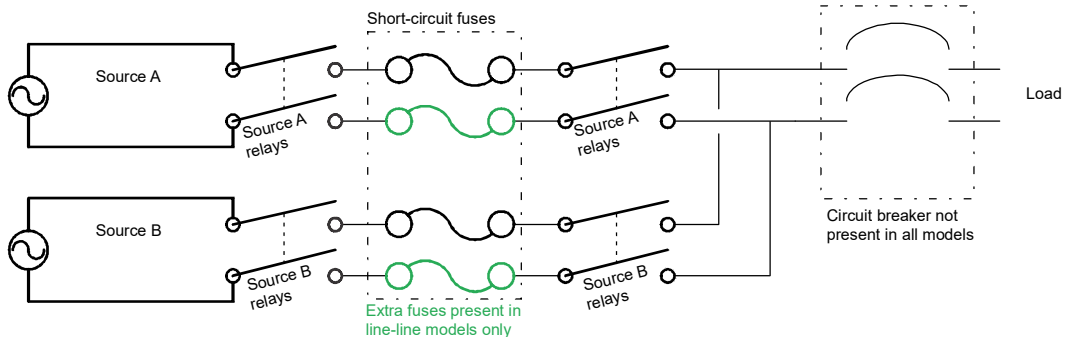
# Automatic Transfer Switch AP4422

## Overview

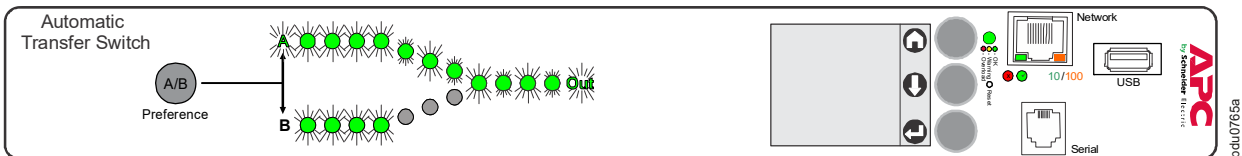
The APC by Schneider Electric Rack Automatic Transfer Switch (ATS) provides reliable, redundant power to single-corded equipment loads, such as servers. The Rack ATS has two input power cords supplying power to the connected loads. If the primary source becomes unavailable or out of the selected range, the Rack ATS will seamlessly source power from the secondary source without interrupting critical loads.

The Rack ATS has built-in network connectivity, which allows for remote management via Web, Telnet, SNMP, SSH or StruxureWare Data Center Expert® interfaces.

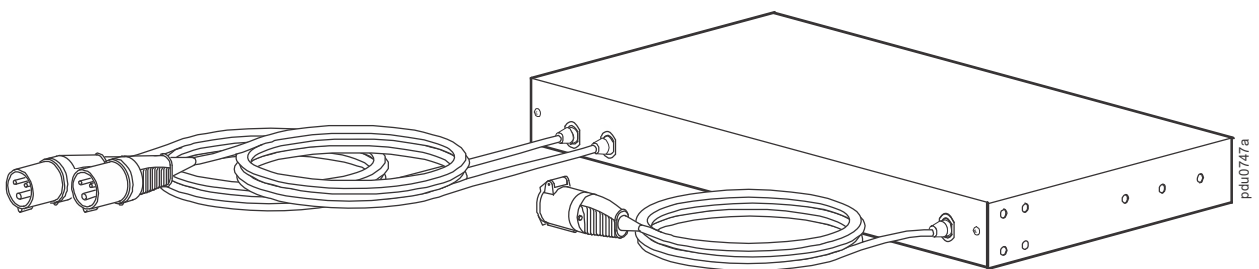
### ATS schematic



### Front



### Rear



**Input power cords:** The two IEC 309-16 A, 3-pin plug cords connect the switch to two separate power sources (A, B). The switch is set to draw power from the preferred source and to automatically switch over to the secondary source when necessary.

**Output power cord:** The IEC 309-16 A, 3-pin output cord connects the switch to a Rack-mount PDU, providing a redundant source of power to the PDU and the equipment connected to it.

# Specifications

## Electrical

|                                 |   |
|---------------------------------|---|
| Nominal input voltage           | 230 VAC   |
| Acceptable input voltage        | ±10% of nominal   |
| Input frequency                 | 50/60Hz   |
| Input connectors                | Two (2) 0.9 m (3 ft) attached IEC 309-16 A, 3-pin line cords                            |
| Output connector                | 0.9 m (3 ft) attached IEC 309-16 A, 3-pin line cord                                     |
| Maximum output current (outlet) | 16 A (IEC 309)  |
| Maximum output/input current    | 16 A  |
| Overload protection             |   |
| Internal                        | Not provided with unit  |
| External                        | Not provided with unit  |
| Transfer time                   | 10 ms maximum (high sensitivity, 50–60 Hz)<br>12 ms maximum (low sensitivity, 50–60 Hz) |
| Short circuit current rating    | 10 kA   |

## Physical

|                                    |   |
|------------------------------------|---|
| Dimensions<br>(H × W × D)          | 43.7 x 431.8 x 236.2 mm<br>(1.72 x 17.00 x 9.30 in)   |
| Shipping dimensions<br>(H × W × D) | 114.3 x 600.2 x 355.6 mm<br>(4.50 x 23.63 x 14.00 in) |
| Weight                             | 4.29 kg (9.26 lb)                                     |
| Shipping weight                    | 6.02 kg (13.28 lb)                                    |

## Environmental

|                        |                                |
|------------------------|--------------------------------|
| Elevation (above MSL): |                                |
| Operating              | 0 to 3000 m (0 to 10,000 ft)   |
| Storage                | 0 to 15 000 m (0 to 50,000 ft) |
| Temperature:           |                                |
| Operating              | –5 to 45°C (23 to 113°F)       |
| Storage                | –25 to 65°C (–13 to 149°F)     |
| Humidity:              |                                |
| Operating              | 5 to 95%, non-condensing       |
| Storage                | 5 to 95%, non-condensing       |

## Compliance

|                               |  |
|-------------------------------|--|
| EMC                           | EMC Directive 2014/30/EU                         |
| Safety                        | UL - EU / CE UL/EN/IEC 60950-1<br>LVD 2014/35/EU |
| Approved for IT power systems | Yes  |

Customer support and warranty information are available on the website,  
[www.apc.com](http://www.apc.com).